



Dyneek

Your Dental Suture Experts



Dyneek is Australia's leading suture manufacturer, renowned for a commitment to surgical excellence and innovation. We craft premium absorbable and non-absorbable sutures, many of which are ideally suited for dental, oral, and oral maxillofacial surgeries.

Since 1974, our singular focus on the unique needs of medical professionals, along with the excellence of our products, have been key to our reputation as a world class manufacturer and supplier of surgical suture products.

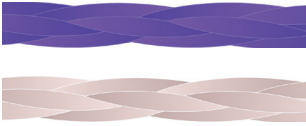
Trust Dyneek for superior sutures and excellent patient outcomes.



DYNEEK

*Manufacturing Australian
sutures for the world since 1974*

Biovek[®]



Synthetic Absorbable

Dyed (violet) or undyed (beige) braided multifilament coated polyglycolide (PGA)

An alternative to

- Ethicon Vicryl[®]*
- Medtronic Polysorb[®]
- Braun Novosyn[®]
- LOOK Polysyn[®]

* Biovek[®] is also a possible alternative to Ethicon Vicryl Rapide[®] with slightly longer absorption and wound support.



Day of surgery



Day of surgery



14 days post-surgery



All-On-4[®] procedure

Features

- Optimum mid-term wound support
- Coated for smooth passage and minimal tissue trauma
- Coated material provides a uniform absorption profile
- Superior knot run down and knotting capabilities
- Also available in a range of micro needles
- Uniform absorption through hydrolysis provides predictable absorption irrespective of patient health:

Tensile Strength	70%	35%
Days	14	21
Complete Absorption	60 - 90 days	



Potential dental procedures*

- Surgical extractions
- Implant surgeries
- All-On-4[®] procedures
- Biopsies
- Oral maxillofacial surgeries
- Other dental procedures as deemed appropriate

* Choice of suture is at the discretion of the surgeon

Available and popular Biovek[®] product codes and specification

Contact us for any other suture specifications and availability

Needle*	USP Metric	Colour	Thread			
			6/0 0.7	5/0 1	4/0 1.5	3/0 2
3/8 Circle Reverse Cutting						
13mm ▼	45cm	Violet		NAB5040		
3/8 Circle Reverse Premium Cutting						
11mm	45cm	Violet	NAB602D			
		Undyed	NAB602DC	NAB502DC		
13mm	45cm	Violet	NAB6049	NAB5049		
		Undyed		NAB5049C	NAB4049C	
16mm	45cm	Violet			NAB404	NAB304
		Undyed		NAB504C		
16mm	76cm	Violet		NAB1504	NAB1404	
		Undyed		NAB1504C	NAB1404C	
19mm	45cm	Violet		NAB505	NAB405	NAB305
		Undyed			NAB405C	NAB305C
19mm	76cm	Violet			NAB1405	
		Undyed		NAB1505C	NAB1405C	NAB1305C
24mm	76cm	Violet			NAB1406	
		Undyed			NAB1406C	NAB1306C
3/8 Circle Fineline[®] (Conventional Premium) Cutting						
16mm	76cm	Undyed		NAB15025C		
1/2 Circle Round Bodied Taper						
18mm	76cm	Violet		NAB5064	NAB4064	NAB3064
20mm	76cm	Violet			NAB4065	
25mm	76cm	Violet			NAB4068	NAB3068





Potential dental procedures*

- Implant surgeries with bone graft
- Guided bone regenerations (GBR)
- Sinus fenestrations
- Mucoperiosteal flaps
- Other dental procedures as deemed appropriate

* Choice of suture is at the discretion of the surgeon

Monovek[®]

Synthetic Long-term Absorbable

Dyed (violet) monofilament polydioxanone (PDO)

An alternative to

- Ethicon PDS II[®]
- Ethicon Monocryl[®]
- Medtronic Maxon[®]
- Braun MonoPlus[®]
- Resorba Glycolon[®]












Features

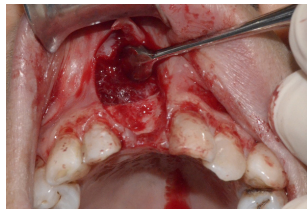
- Excellent long term tensile strength
- Ideal absorbable suture when extended wound support is required
- Monofilament structure provides smooth passage and minimal tissue trauma
- Superior knot run down and knotting capabilities
- Uniform absorption thorough hydrolysis provides predictable absorption irrespective of patient health:

Tensile Strength	75%	65%	50%
Days	14	28	49
Complete Absorption	6 months		

Available and popular Monovek[®] product codes and specification

Contact us for any other suture specifications and availability

Needle*	Thread				
	USP Metric	6/0 0.7	5/0 1	4/0 1.5	3/0 2
3/8 Circle Reverse Cutting					
13mm 	45cm	NAM6040	NAM5040	NAM4040	
3/8 Circle Reverse Premium Cutting					
11mm 	45cm	NAM602D	NAM502D		
13mm 	45cm	NAM6049	NAM5049	NAM4049	
	76cm		NAM15049		
16mm 	45cm	NAM604	NAM504	NAM404	
19mm 	45cm		NAM505	NAM405	NAM305
24mm 	76cm				NAM1306
3/8 Circle Conventional Cutting					
13mm 	45cm	NAM6093			
16mm 	76cm	NAM16037	NAM15037		
1/2 Circle Round Bodied Taper					
13mm 	76cm	NAM6055			
18mm 	76cm		NAM5064	NAM4064	NAM3064
25mm 	76cm				NAM3068



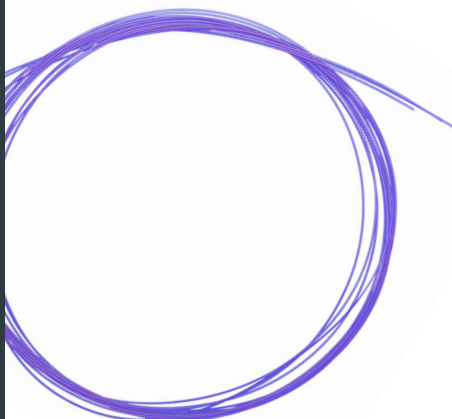
Day of surgery



Day of surgery



21 days post-surgery





Potential dental procedures*

- Surgical extractions
- Biopsies
- Cleft lip and palate surgeries
- Oral maxillofacial surgeries
- Other dental procedures as deemed appropriate

* Choice of suture is at the discretion of the surgeon

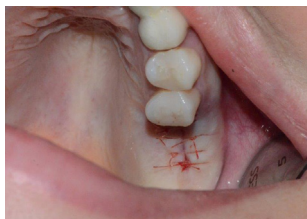
Chromic Catgut

Natural Absorbable

Monofilament chromic surgical catgut

An alternative to

- Ethicon catgut



Day of surgery

Features

- Manufactured by Dynek since 1974
- *Smooth, supple, soft, and pliable
- Optimal tensile strength *in vivo* performance
- Monofilament structure provides smooth passage and minimal tissue trauma
- Superior knot run down and knotting capabilities
- A specialised spinning and grinding process creates chromic gut suture strands of uniform diameter
- The chromic gut suture strands are further polished to achieve maximum smoothness for reliability and strength
- Uniform diameter of chromic gut suture strands allows for an even absorption rate
- Chromic gut is chromicised before it is spun for a longer absorption rate
- Absorption through enzyme digestion:

Chromic

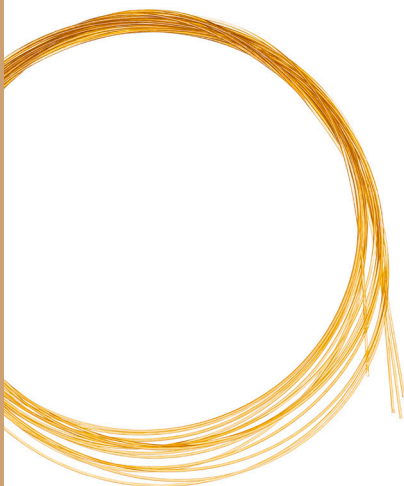
20 to 40 days

* Suture packet must only be opened *and* the suture only removed at the time of surgery to prevent the chromic gut suture strand from drying out

Available and popular Chromic Catgut product codes and specification

Contact us for any other suture specifications and availability

Needle*	Thread					
	USP Metric	6/0 1	5/0 1.5	4/0 2	3/0 3	2/0 3.5
3/8 Circle Reverse Cutting						
12mm ▼	50cm	CG602	CG502			
13mm ▼	50cm		CG5040			
3/8 Circle Reverse Premium Cutting						
11mm <input checked="" type="checkbox"/>	50cm	CG602D	CG502D			
13mm <input checked="" type="checkbox"/>	50cm	CG6049	CG5049			
16mm <input checked="" type="checkbox"/>	50cm	CG604	CG504	CG404	CG304	
19mm <input checked="" type="checkbox"/>	50cm		CG505	CG405	CG305	
	76cm		CG1505	CG1405	CG1305	
24mm <input checked="" type="checkbox"/>	50cm				CG306	CG206
	76cm				CG1306	
1/2 Circle Round Bodied Taper						
18mm ●	76cm			CG4064		
20mm ●	76cm			CG4065	CG3065	
25mm ●	76cm			CG4068	CG3068	CG2068





Potential dental procedures*

- Surgical extractions
- Biopsies
- Cleft lip and palate surgeries
- Oral maxillofacial surgeries
- Other dental procedures as deemed appropriate

* Choice of suture is at the discretion of the surgeon

Plain Catgut

Natural Absorbable

Monofilament plain surgical catgut

An alternative to

- Ethicon catgut
- Braun Monosyn® (synthetic)

Features

- Manufactured by Dynek since 1974
- *Smooth, supple, soft, and pliable
- Optimal tensile strength *in vivo* performance
- Monofilament provides smooth passage and minimal tissue trauma
- Superior knot run down and knotting capabilities
- A specialised spinning and grinding process creates plain gut suture strands of uniform diameter
- The plain gut suture strands are further polished to achieve maximum smoothness for reliability and strength
- Uniform diameter of plain gut suture strands allows for an even absorption rate
- Absorption through enzyme digestion:

Plain	7 to 10 days
-------	--------------

* Suture packet must only be opened *and* the suture only removed at the time of surgery to prevent the plain gut suture strand from drying out

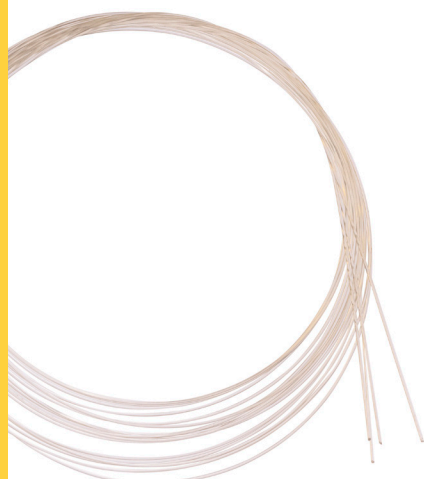


Day of surgery

Available and popular Plain Catgut product codes and specification

Contact us for any other suture specifications and availability

Needle*	Thread				
	USP Metric	6/0 1	5/0 1.5	4/0 2	3/0 3
3/8 Circle Reverse Cutting					
12mm	50cm		PG502		
3/8 Circle Reverse Premium Cutting					
11mm	50cm	PG602D			
13mm	50cm		PG5049		
16mm	50cm		PG504	PG404	PG304
	76cm			PG1404	
19mm	50cm		PG505	PG405	PG305
	76cm		PG1505	PG1405	PG1305
24mm	50cm			PG406	PG306
	76cm				PG1306
1/2 Circle Round Bodied Taper					
25mm	76cm				PG3068
1/2 Circle Round Bodied A-CUTE® (Cutting Tip) Taper					
25mm	50cm				PG3032Z





Potential dental procedures*

- Implant surgeries
- Bone grafts
- Soft tissue grafts
- Periodontal surgeries
- Oral maxillofacial surgeries
- Cleft lip and palate surgeries
- Other dental procedures as deemed appropriate

* Choice of suture is at the discretion of the surgeon

Dyloc®

Synthetic Non-absorbable

Blue monofilament polyether-ester elastomer (polyester)

An alternative to

- Medtronic Novafil®
- Silk
- Nylon
- Cytoplast PTFE

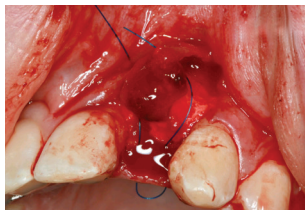
Features

- Smooth, supple, soft, and pliable
- Extremely low memory prevents knotting and tangling during removal from suture packet
- Thermo-elastic properties:
 - provide exceptional tying, handling, and knotting capabilities
 - allow expansion and contraction during healing
 - lead to suture softening in the mouth resulting in greater patient comfort
- High tensile strength *in situ* allows smaller diameter thread to be used for superior cosmetic results
- Monofilament structure:
 - provides smooth passage and minimal tissue trauma
 - leads to tissue not infiltrating or attaching to thread
- Suitable for procedures where PTFE, EPTFE, nylon and silk sutures are used where thermos-elasticity is preferred

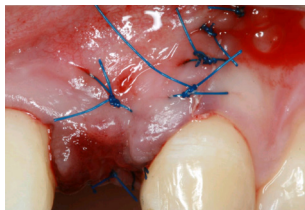
Available and popular Dyloc® product codes and specification

Contact us for any other suture specifications and availability

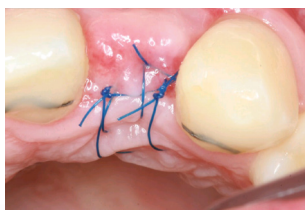
Needle*	Thread				
	USP Metric	6/0 0.7	5/0 1	4/0 1.5	3/0 2
3/8 Circle Reverse Cutting					
12mm ▼	45cm	D602	D502	D402	
3/8 Circle Reverse Premium Cutting					
11mm ☑	45cm	D602D	D502D		
13mm ☑	45cm	D6049	D5049		
16mm ☑	45cm	D604	D504	D404	D304
19mm ☑	45cm	D605	D505	D405	D305
24mm ☑	45cm			D406	D306



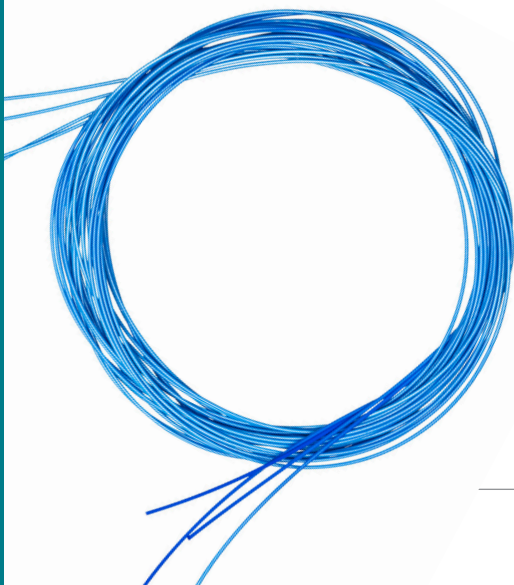
Day of surgery



Day of surgery



14 days post-surgery



For surgeons preferring to use Dysilk® or Nylene®, please contact us for available suture specifications.





Potential dental procedures*

- Apicoectomies
- Periodontal surgeries
- Reconstructive surgeries
- Endodontic surgeries
- Other dental procedures as deemed appropriate

* Choice of suture is at the discretion of the surgeon

Vilene®

Synthetic Non-absorbable

Blue monofilament polyvinylidene fluoride (PVDF)

An alternative to







- Ethicon Prolene®
- Medtronic Surgipro II®
- Braun Premilene®
- Cytoplast PTFE
- Nylon

Features

- Smooth, fray-free, and supple
 - Will not fray or fracture if handled correctly
- Very low memory, with the curves straightening out when the thread is gently pulled
- Low frictional characteristics facilitating excellent knot-tying
- Has very little elasticity
- Physiologically very inert
- Very high tensile strength *in situ* allows smaller diameter thread to be used for superior cosmetic results
- Monofilament structure:
 - provides smooth passage and minimal tissue trauma
 - leads to tissue not infiltrating or attaching to thread
- Suitable for procedures where PTFE, EPTFE, nylon, and polypropylene sutures are used

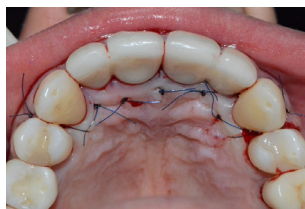
Available and popular Vilene® product codes and specification

Contact us for any other suture specifications and availability

Needle*	Thread					
	USP Metric	7/0 0.5	6/0 0.7	5/0 1	4/0 1.5	3/0 2
3/8 Circle Reverse Cutting						
12mm 	45cm		V602	V502		
3/8 Circle Reverse Premium Cutting						
11mm 	45cm	V702D	V602D	V502D		
13mm 	45cm		V6049	V5049		
16mm 	45cm		V604	V504	V404	
19mm 	45cm			V505	V405	V305
24mm 	45cm				V406	V306



Day of surgery

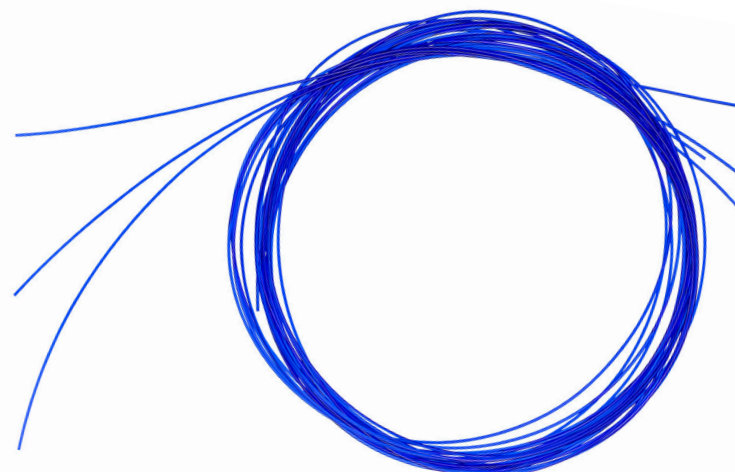


Day of surgery



Healing complete

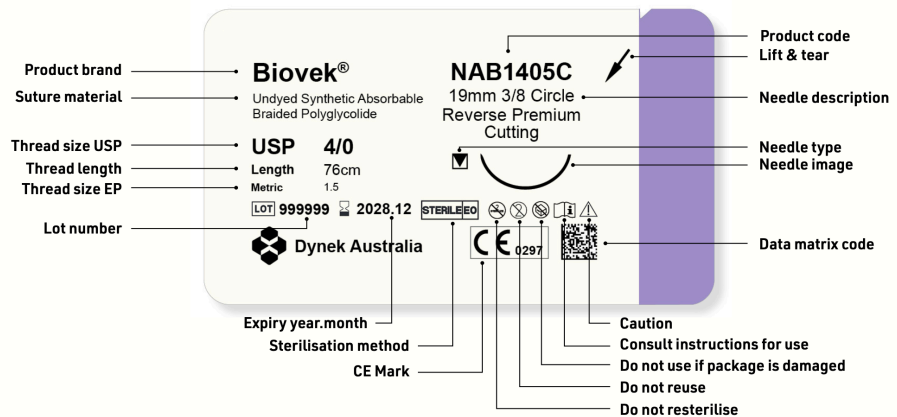
For surgeons preferring to use Nylene®, please contact us for available suture specifications.



Available Suture Material and USP Sizes					✓ Available						
Material	Construct	Material	Brand	Colour	8/0	7/0	6/0	5/0	4/0	3/0	2/0
PGA	Braided	Absorbable	Biovek®	Violet	✓	✓	✓	✓	✓	✓	✓
PGA	Braided	Absorbable	Biovek®	Beige			✓	✓	✓	✓	✓
PDO	Monofilament	Absorbable	Monovek®	Violet			✓	✓	✓	✓	✓
Catgut	Monofilament	Absorbable	Plain Gut	Beige			✓	✓	✓	✓	✓
Catgut	Monofilament	Absorbable	Chromic Gut	Brown			✓	✓	✓	✓	✓
Polyester	Monofilament	Non-absorbable	Dyloc®	Blue			✓	✓	✓	✓	✓
PVDF	Monofilament	Non-absorbable	Vilene®	Blue		✓	✓	✓	✓	✓	✓
Nylon	Monofilament	Non-absorbable	Nylene®	Blue			✓	✓	✓	✓	✓
Silk	Braided	Non-absorbable	Dysilk®	Black			✓	✓	✓	✓	✓

Standard lengths: 45cm and 76cm (catgut 50cm and 76cm) **Other lengths:** Please contact us
If material is not shown, please contact us.

How to interpret Dynek suture packets



How to interpret Dynek code numbers

The codes convey three pieces of information:

- A. The first letter(s) refer to the material.**
- B. The next number(s) refer to the USP thread size.**
- C: The final number(s) refer to the needle code.**

* If 1 precedes the thread size, this indicates a longer thread length than the standard. For example, N306 has a 45cm thread, whereas N1306 has a 76cm thread.

- The information contained in this document is intended as a guide only.
- Always refer to the instructions for use when using Dynek sutures.
- All Dynek sutures are included on the ARTG (AU) and Medsafe (NZ).
- All Dynek sutures (apart from Chromic and Plain Catgut) are included on the CE Mark (EU).
- Knot tying requires the standard surgical technique of flat and square ties with additional throws as indicated by surgical circumstance.
- A minimum order quantity may apply to all products.



dytek.com

AU: 1800 088 172

NZ: 0800 459 649

INT: +61 8 8268 2033

sales@dytek.com